



# HORSTKEMPER

INDIVIDUELLE ANLAGENTECHNIK



**Ideas ■ Prozesses ■ Solutions**

**We realize future**



## Table of contents

The Company 2-3

Team and achievements 4-5

Product portfolio 6-7

Wood and furniture industry 8-9

Transport and handling technology 10-11

waverail® system 12-13

Press automation 14-15

Special machinery 16-17

Service 18-19

## Innovation is our business

Our internationally active medium-sized family business with almost 70 years of experience serves as a strong basis for the success of our customers, who hail from a broad variety of industries. High quality and solid qualifications are valuable building blocks for our daily work. With us, you are in competent hands from the start.

**Holistically oriented**, we offer you all the services you need from a single source. From planning, design and project development to production and assembly all the way to comprehensive after-sales service. Flexible, fast and ready to provide customised solutions at any time. Always up-to-date, we face the growing challenges of the market. We constantly consider new technologies and innovations for our work. The planning of any project requires conceptual thinking and action. With our great dedication and high level of expertise, we seek and find innovative solutions for you. Sustainability shapes our strategic approach in all our activities. Of course, we adhere to environmental standards and treat resources sparingly.

**In close dialogue** with our customers, we design and develop the systems using cutting-edge 3D CAD/CAM technology. The level of competence of our experienced employees ensures tried-and-tested, uncompromising product quality. Digital order data ensures that maximum information is provided in every production phase.

**Innovation is our business.** The ever-changing market needs of our customers spur us on to realise new solutions and concepts. We work in teams to develop ideas, steer them into targeted channels and combine tried-and-tested concepts with completely new ones. In the scope of feasibility studies, including cycle-time calculations and real-time simulations, our customers are won over by our high-performance mechanical engineering even before placing an order.

**We apply experience.** Maximum precision and cost-effectiveness are among the demands placed on modern machining centres. All work steps, from the precise cutting of the materials, to turning, milling, bending and drilling, down to creating the perfect finish, should be carried out directly in a single cycle.

An important element is feedback from manufacturing, because it flows directly into the design and forms the basis for a high-quality, yet economical machine. The high level of competence of our employees shape the production result all the way down to high-precision assembly.

**Control is a must.** Final assembly is followed by a comprehensive function check and system commissioning. The cooperation we share with our customers is marked by an ongoing intensive exchange of ideas that continues until final instruction at the machine. Only once our partners express their satisfaction does a project end, creating confidence in a future long-term cooperation.

We look forward to you!





# Team



## A team you can rely on

Every project that we realize draws from the experience of our project engineers and designers as well as from the high qualification and commitment of our more than 65 employees.

We offer everything from a single source, from concept development and the detailing and implementation of the project objectives to final acceptance and service.

The search for innovative solutions is our daily challenge, which we rise to meet with great commitment and expertise. Conceptual thinking and acting are the basis of all project planning.

All employees in the team are highly qualified and receive regular training. In order to count on skilled workers in the long term, we also prefer to train our next generation of precision mechanics ourselves.





## These are the services that matter

Our range of services covers all the necessary tasks. From consulting to design and manufacture to installation, commissioning and service. These include system planning and simulation, CAD 3D designs, project planning, mechanical engineering, assembly, installation and test runs, and also control systems, documentation and more.

For us, the sky is the limit when it comes to finding a solution. The final goal is to achieve the best possible cost-benefit effect at all times. That is why we develop innovative products and support our customers as a full service provider. In our development department, pioneering innovations are emerging, including patent applications, for example for our "waverail® rail system".

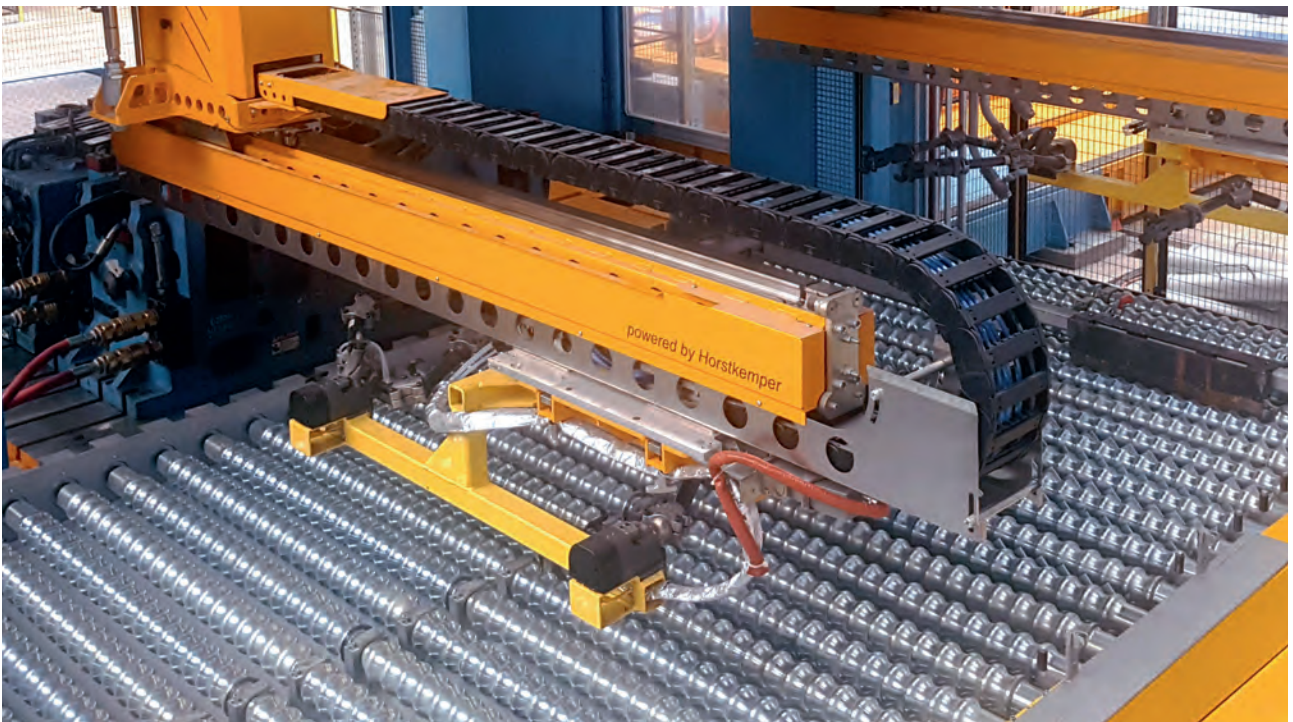
- An experienced team in action
- All from a single source
- Competent specialists, continuously trained
- Versatile service spectrum
- Concepts for automation
- Consulting and information in dialogue with customers
- Close to our customers



Product portfolio



Wood and furniture industry



Press automation





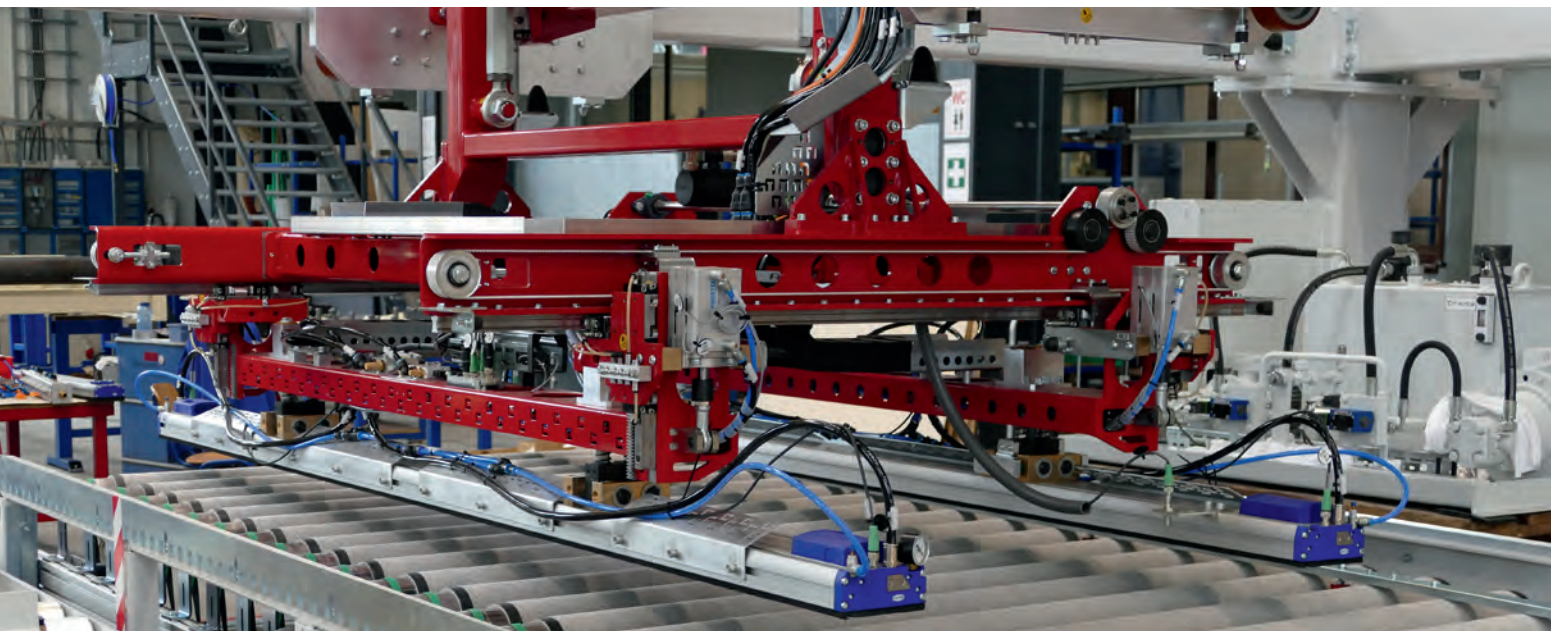
Transport and handling technology



Special Machines



## Wood and furniture industry



### A special kind of relationship

We see our commitment in the provision of innovative machine and plant technology. That is exactly what we focus on by planning, building and delivering tailored solutions for you.

Companies and production processes have their specific functions and special features. Since standard solutions do not usually lead to the desired result, especially for the wood and furniture industry, we specify your requirements for optimum and individually developed production processes.

Both for the production of individual pieces of furniture and for different materials used in different processing and production steps and in door production through the use of fast and compact systems for charging a CNC with subsequent stacking.





### Always one step ahead

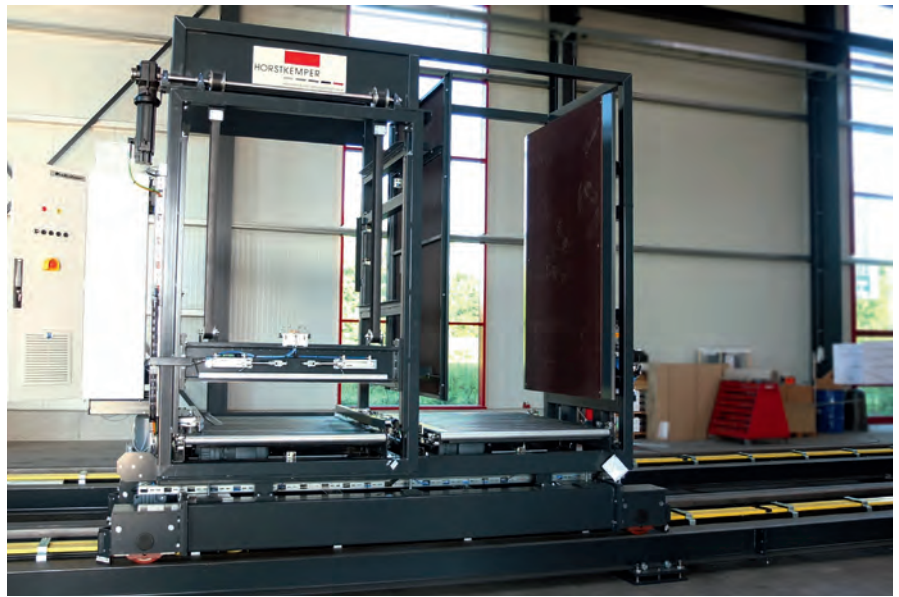
We offer our innovative machine and system technology for the fully automated complete machining of furniture parts. Our range of tasks is highly diverse. For example, when conveying panel stacks via cross conveyors and floor roller tracks, when separating the panel stacks, when loading the panel-sizing saw through a stacking portal or during transport.

We have many years of know-how and offer you complete system solutions. From the selection of suitable individual components and control elements to the complete production line, we precisely evaluate and harmonise all the details.

- Customized solutions
- Long-standing know-how
- Focus on individual production processes
- Exactly tailored to your requirements
- Far-sighted system solutions
- Impressive versatility



## Transport and handling technology



## Process know-how further evolved

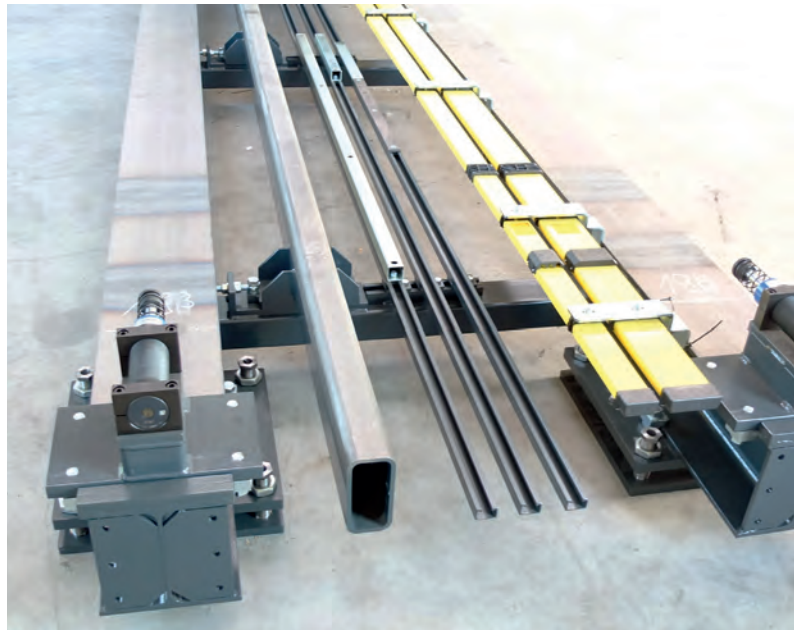
Parts and materials must be transported from place to place in all technical and automated areas. This is where further processing takes place. Transport and handling technology from HORSTKEMPER is used in these cases. With the aim of moving, rotating, turning over or separating materials.

For the handling and transport of components, we offer individually adapted logistics solutions. Our technology is high-quality and durable. This ensures you high availability.

These clever solutions are designed to suit your production processes. Moreover, maintenance and servicing can also be precisely coordinated. This means greater efficiency and process reliability.



## Transport and handling technology



### To keep transport flowing

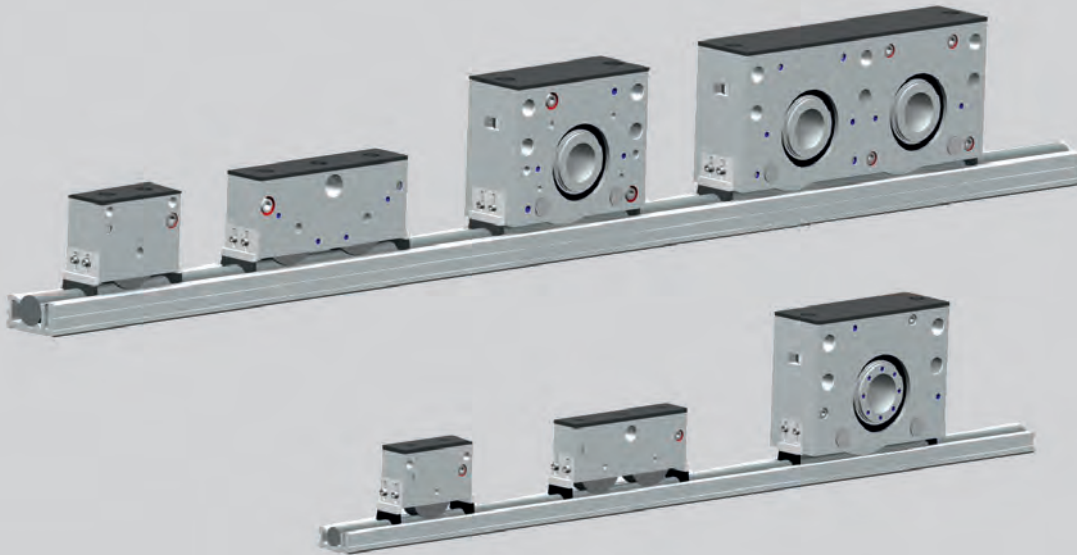
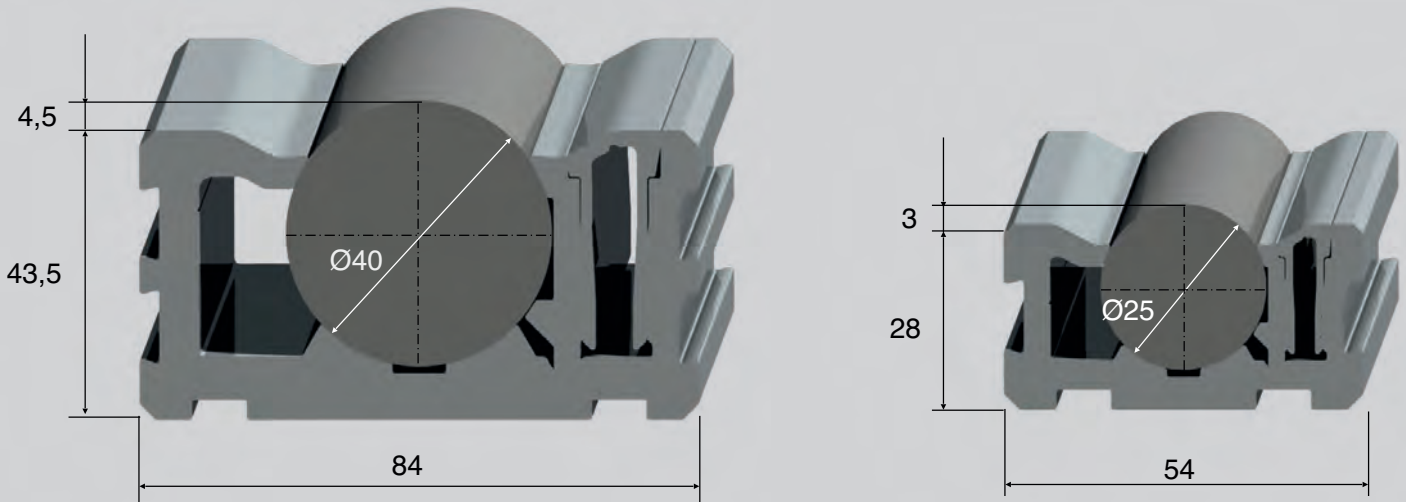
Attractive solutions for line assembly enable you to improve your production workflow. This simplifies all the logistics processes. It allows you to plan better with a fixed cycle.

Storage and retrieval units allow for the fully automatic storage and retrieval of the items. Increased requirements for a state-of-the-art and fast flow of goods. You can also handle special requests from a wide variety of areas, for example with our cross conveyors.

Our intelligent solutions also account for profitability and occupational safety.

- Improved production processes
- Attractive assembly line solutions
- Customized logistics solutions
- Special requirements optimally met
- React to new requirements in a targeted way
- Durable and high-quality technology

## waverail® system



### Ideal for small and heavy loads

As an experienced specialist for storage and material flow systems, HORSTKEMPER Maschinenbau GmbH has designed and developed its own patent-pending rail system.

The waverail® offers all the advantages of a rail system that is embedded into and flush with the floor. The hardened and ground shafts, which are fixed precisely in the support profile, ensure minimum rolling resistance. Due to its novel profile geometry, the waverail® features a significantly improved clamping system for fixing the shaft in the extruded aluminium profile.

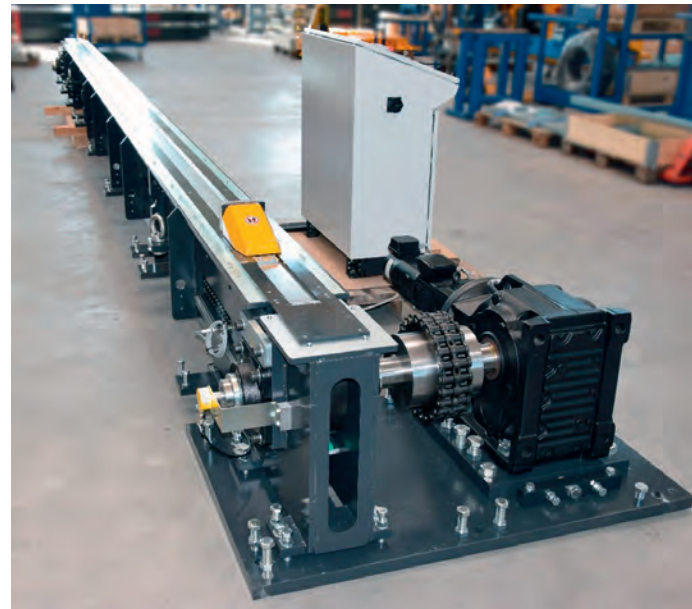
The rail system is used in numerous industrial applications and use cases. These range from simple set-up operations to fully automated intralogistic material flows. Thanks to its ingeniously simple

construction, the waverail® is not only quick to install, but also incomparably efficient. The waverail® is suitable for small to very large transport weights and can be used to convey even the highest loads with low drive forces in an energy-saving, safe and precise manner.

In addition to the waverail® system, the experienced HORSTKEMPER team offers the entire spectrum of planning services as well as in-house production for all required mechanical engineering. We precisely test the individual customer requirements of each application and develops customised solutions.

Ideas - processes - solutions: For us, these are the key ingredients that go into developing a perfectly coordinated intralogistic concept - for you too.





## Benefits of the waverail® system wr25 and wr40

- Simple floor-level installation in existing and new hall structures
- The waverail® system has no tripping edges, can be easily walked over and driven over by all common industrial trucks, such as forklifts, lift trucks and sweepers
- Low wear and maintenance due to compact surface and system geometry
- Due to the low rolling resistance, heavy loads can be easily moved by hand and ensure excellent ergonomics

- High running smoothness, directional stability and positioning accuracy
- Easy-to-clean rail system without depressions and dirt channels
- The waverail® system can be expanded as required
- Short payback periods
- Colour marking and floor coating allow a clear delimitation of the rail track



## Press automation



## A question of trust

The fields of application of HORSTKEMPER plant technology range from retrofit projects for the modernization of existing press lines to complete new plants. In order to increase the productivity of presses, automation is of crucial importance. It assumes a key role within the press lines.

HORSTKEMPER develops, designs, builds and supplies complete press automation for press plants in the automotive and supplier industries as well as for the white goods sector.

We have specialized in automation for press plants in the automotive industry for about 30 years. For us, the complete control technology is part of our portfolio for machine and plant engineering. In close cooperation with proven partners. We develop customized solutions for our customers.





## The dawn of a new era

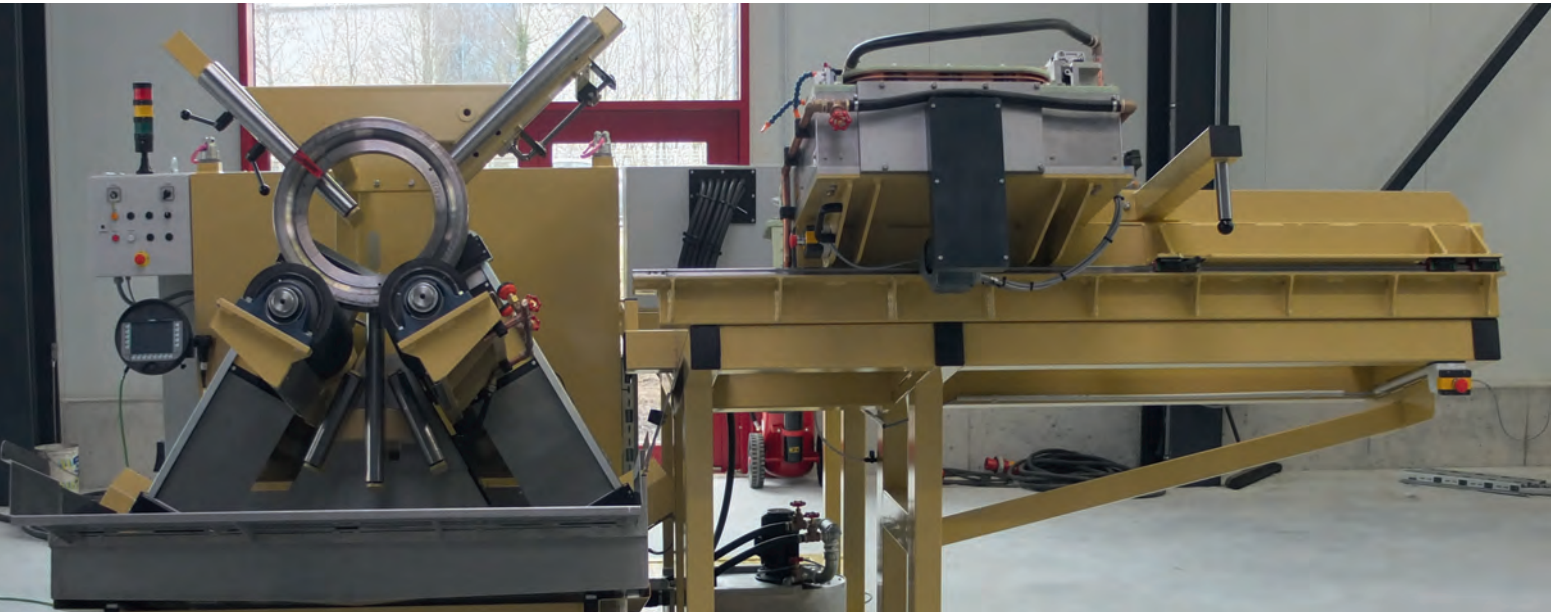
The highest quality and performance standards are always guaranteed. In addition to machine and plant engineering, we also supply the complete control technology with long-standing, highly specialized partners as turn-key systems.

Many renowned customers from the automotive and supply industries and mechanical engineering already rely on the customised system technology, experience and high quality of HORSTKEMPER. As a competent partner for complete blank loaders, press automation with feeders and end-of-line systems, we are in demand.

- Automation in the automotive industry
- Specialized and experienced down to the last detail
- Complete control technology included
- We realize process chains
- Highest standards in quality and performance
- From retrofit projects to complete new plants



## Special Machines



## We put you on the path to success

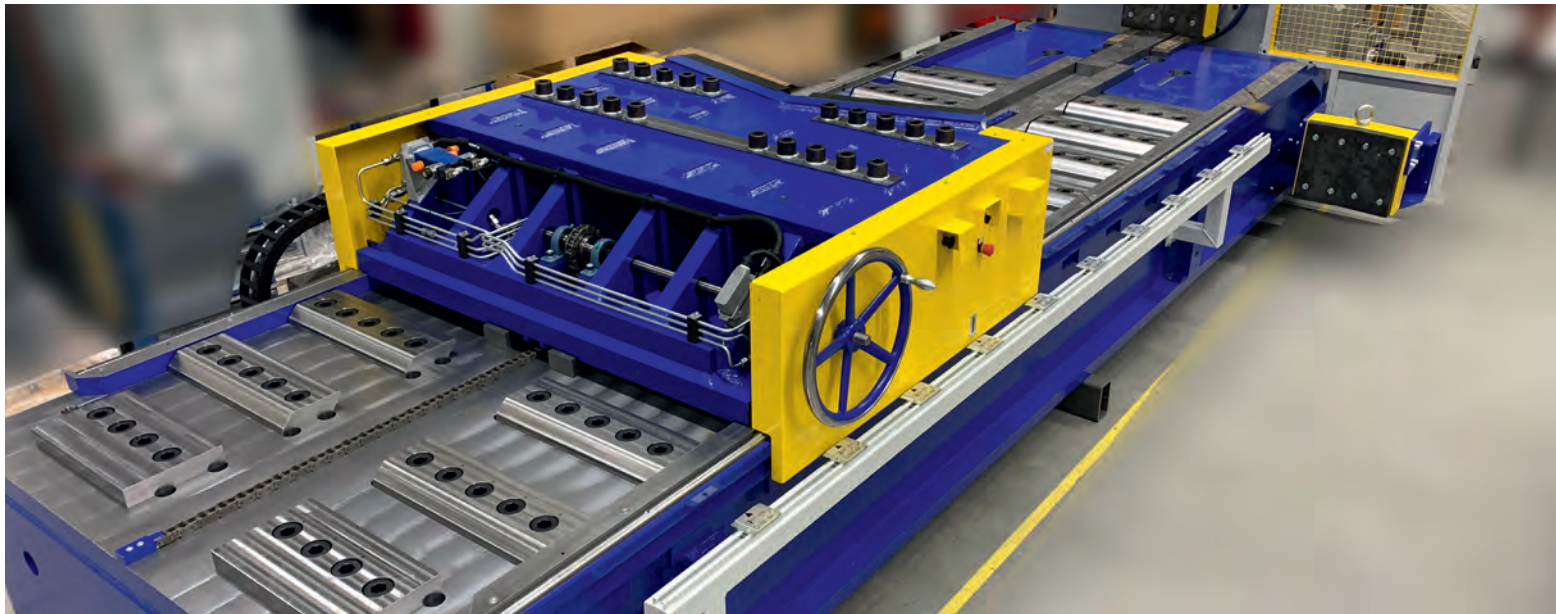
HORSTKEMPER Maschinenbau designs and manufactures your machine, unit or device. In our departments and the connected production we are able to implement your ideas as well as very specific requests. We also manufacture in small quantities, such as single machines or small series.

Of course we also create complete production lines for our customers. Our comprehensive range of services is based on your actual needs. This ranges from planning and design to implementation and setup to servicing and maintenance.

Our specially trained HORSTKEMPER team has been dedicated to the area of test benches for many years and has developed numerous solutions for various test types.

We manufacture hydraulic presses used for straightening welding constructions, steel beams and complex rings for a wide variety of manufacturing processes.





### Flexibly adjusted to your wishes

CNC drilling machines are used for drilling and thread-cutting operations with high-strength steels. The design is compact and powerful. Our customers can be assured of the high flexibility and efficiency of the machine. High-tech components ensure that the highest demands are met in the machining process.

Completely new areas of application can be realized with current drone technologies. Transporting defibrillators and medical equipment is just one example. The SkyPort drone hangar is made of a specially torsion-resistant steel construction.

- Comprehensive range of services
- Implementation of special requirements
- Partner for the construction of complete plants
- Compact and powerful design
- A wealth of experience and an extensive network
- High added value



## Service



### If you need us: We're there for you fast

For us, the quick availability of spare parts is an important part of service. Our material store is well equipped. If required, we supply our customers with spare parts. Short delivery times and high flexibility are our top priority. Digital spare parts and maintenance lists support the workflow.

Our employees carry out various services worldwide, including modernizations, extensions, conversions, retrofits and repairs.

As a reliable partner, we attach great importance to a rapid response with timely solutions. Our service framework agreements are just as much part of our service range as targeted training courses with different focuses.





## So that everything runs smoothly: Production reliability for you

Our after-sales offers include a maintenance contract. This ensures maximum production reliability for our customers. The best reasons for this contract include manufacturer competence, operational reliability, reduced employee workload, legal security and fast assistance in the event of damage and in the on-site provision of spare parts, thereby increasing your plant availability. We respond in next to no time.

Would you like to use a special service to get in touch with us? Simply register as a user in the Service area of our website. We will take care of your request immediately.

- Rapid response in the event of damage
- Timely solutions
- Service framework agreements
- Targeted training
- Spare parts supply
- Maintenance contract
- Long-term value retention of the plant



# HORSTKEMPER



INDIVIDUELLE ANLAGENTECHNIK



HORSTKEMPER  
MASCHINENBAU GMBH  
LÖFKENFELD 65  
DE 33397 RIETBERG

FON: +49 2944 97020  
FAX: +49 2944 970233

INFO@HORSTKEMPER.DE  
WWW.HORSTKEMPER.DE

